

Florida Pathways Institute: Dual Enrollment Partnerships

A Toolkit to Support Dual Enrollment Enhancement and Expansion



**AN INITIATIVE OF
THE FLORIDA COLLEGE SYSTEM**

Introduction

Welcome to the ***Florida Pathways Institute: Dual Enrollment Partnerships Toolkit***. This resource is designed to support school districts and postsecondary institutions in developing and enhancing dual enrollment programs. By utilizing this toolkit, core teams will elevate their dual enrollment initiatives, ensuring students across Florida have access to high-quality college and career opportunities.

The Florida Student Success Center launched a new Florida Pathways Institute open to all Florida public postsecondary institutions or Independent Colleges and Universities (ICUF) institutions and their partner school district(s) and/or high school(s). The purpose of the Dual Enrollment Partnerships institute was to develop the capacity for strategic leadership in dual enrollment partnerships and promote the purposeful expansion of dual enrollment participation and success. The institute intended to build upon and strengthen existing partnerships that supported high-quality college credit and career dual enrollment.

The institute spanned a period of one year and cohort teams consisting of secondary and postsecondary representatives engaged in the following activities:

- Participated in two face-to-face convenings hosted by the center. Convenings combined discussions with experts and facilitated planning sessions for secondary and postsecondary teams.
- Participated in three virtual workshops that included presentations by national, state, and institutional experts.
- Engaged in asynchronous learning in preparation for convenings and between virtual workshops.
- Reviewed national, state, and institutional dual enrollment data.
- Received coaching, technical assistance, and support related to dual enrollment partnerships.

With the conclusion of the Florida Pathways Institute, after a year of collaborative engagement, the participating teams (see Appendix A) are now well-positioned to expand dual enrollment opportunities and enhance student success. This toolkit is crafted to aid your efforts in creating impactful dual enrollment experiences for students throughout Florida.

By following the provided guidelines and strategies, you can pave the way for academic achievement and student success. The toolkit includes best practices for establishing and maintaining dual enrollment programs, insights from national and state experts, and data-driven approaches to measure and improve outcomes. Additionally, it offers resources for building strong partnerships between secondary and postsecondary institutions, ensuring students receive high-quality education and support.

Objectives of the Florida Pathways Institute: Dual Enrollment Partnerships

This toolkit is organized according to the objectives below, providing a clear and systematic approach to enhancing dual enrollment programs.

Gain a better awareness of Florida dual enrollment policies and practices.

Understand dual enrollment policies and practices. This includes familiarizing stakeholders with the latest legislative updates, best practices, and innovative strategies to navigate the complexities of dual enrollment. Enhanced awareness ensures that all participants are well-informed and prepared to support student success.

Build upon and strengthen existing partnerships that support high-quality college credit and career dual enrollment.

Strengthen existing collaborations between school districts and postsecondary institutions. Effective partnerships are the cornerstone of successful dual enrollment programs. This toolkit provides guidance on fostering strong, sustainable relationships that promote high-quality college credit and career dual enrollment opportunities for students. Collaborative efforts create a seamless transition from high school to postsecondary education.

Promote the purposeful expansion of dual enrollment participation and success.

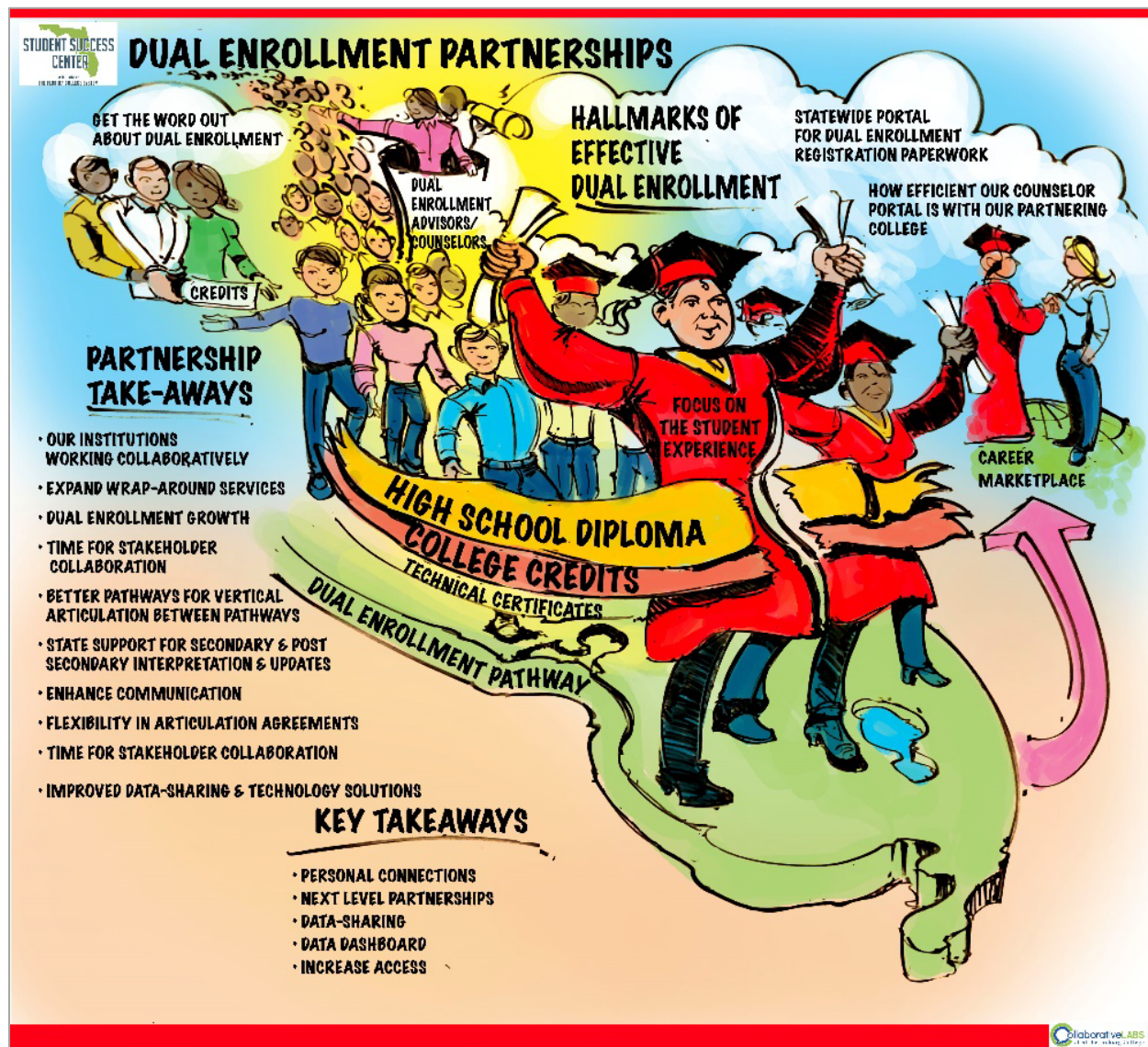
Advocate for the purposeful expansion of dual enrollment participation. Increase student access and success in dual enrollment programs by identifying and addressing barriers to participation, developing targeted outreach strategies, and implementing support systems that ensure all students have the opportunity to benefit from dual enrollment.

Develop the capacity for strategic leadership in dual enrollment partnerships.

Develop strategic leadership capabilities within core teams. Effective leadership is crucial for the sustainability and growth of dual enrollment partnerships. This toolkit offers resources and training to build leadership capacity, enabling teams to lead with vision, strategy, and a commitment to continuous improvement. Strong leaders ensure the long-term success of dual enrollment initiatives.

Now that the Florida Pathways Institute has concluded, after a year of collaborative engagement, the participating partnerships are poised to expand dual enrollment participation and foster student success. This toolkit is designed to support your efforts in creating meaningful and impactful dual enrollment programs. By fostering collaboration and leveraging the strengths of each partner, you can make a significant impact on the lives of students across Florida.

With support from the Collaborative Labs at St. Petersburg College's, the Dual Enrollment Partnerships Cohort identified *Hallmarks of Effective Dual Enrollment* as depicted in the graphic below created by Collaborative Labs illustrator, Jonathan Massie.



The Partnership Take-Aways at the kickoff convening were themes that continued to emerge, particularly “time for stakeholder collaboration.” Effective dual enrollment programs thrive on the strong partnerships between secondary and postsecondary institutions, which require regular and meaningful collaboration. By setting aside time for joint planning, discussion, and problem-solving, partners can align their goals, share best practices, and address challenges together.

Gain a better awareness of Florida dual enrollment policies and practices.

Florida's dual enrollment program is a cornerstone of the state's educational strategy, offering middle and high school students the opportunity to earn college credits and accelerate their academic and career pathways. While the foundational policies and benefits of dual enrollment are well-established, there are several advanced considerations and ongoing shifts in the educational landscape that stakeholders must navigate to enhance and expand these programs effectively.

Current Landscape and Policy Framework

Florida's dual enrollment program is governed by a comprehensive set of policies designed to ensure accessibility, quality, and alignment with secondary and postsecondary educational standards (see **Appendix B**). Key elements include:

- **Dual Enrollment Articulation and Early College Agreements:** These agreements between school districts and postsecondary institutions are critical for defining course offerings, credit transferability, and student support services. However, inconsistencies in the implementation of these agreements can create barriers to program expansion and student participation.
- **Funding Mechanisms:** The program is primarily funded through the Florida Education Finance Program (FEFP), but financial complexities and budget constraints at both the state and local levels can impact the sustainability and scalability of dual enrollment offerings.
- **Eligibility Criteria:** While eligibility requirements such as minimum GPA and standardized test scores are intended to ensure student readiness, they can also be leveraged to create expanded dual enrollment opportunities for students.

Challenges and Opportunities

Despite the successes of Florida's dual enrollment program, several challenges persist:

- **Public Awareness and Perception:** Increasing public awareness about the benefits and opportunities of dual enrollment is crucial. Many students and families are still unaware of the program or have misconceptions about its accessibility and value.
- **Maximum Access:** Ensuring access to dual enrollment opportunities remains a significant challenge. Regularly reviewing dual enrollment data can allow for increased decision-making concerning targeted outreach, support services, and local policy adjustments to develop expanded pathways for students to be successful in career or academic dual enrollment.
- **Streamlining Processes:** Simplifying the administrative processes for dual enrollment, including advising, academic planning, registration, and data monitoring, can enhance program efficiency and student experience. Clear guidance and standardized procedures can help achieve this goal.

Best Practices and Strategic Recommendations

To address these challenges and maximize the impact of dual enrollment programs, stakeholders should consider the following best practices and strategic recommendations:

- **Enhanced Advising and Support:** Providing comprehensive advising services that guide students through the dual enrollment process, from course selection to college application, can significantly improve student outcomes.
- **Strengthening Partnerships:** Building strong, collaborative partnerships between school districts, high schools, postsecondary institutions, and community organizations can enhance program delivery and support student success.
- **Expanding CTE Pathways:** Increasing dual enrollment opportunities in career and technical education (CTE) fields can provide students with valuable skills and certifications that are directly applicable to the workforce, thereby broadening the appeal and utility of the program.
- **Policy Advocacy and Reform:** Advocating for policy reforms that address funding challenges, streamline eligibility criteria, and promote access can help sustain and expand dual enrollment programs across the state.

By focusing on these advanced insights and strategic approaches, Florida can continue to lead the nation in dual enrollment innovation, ensuring all students benefit from this transformative educational pathway.

Build upon and strengthen existing partnerships that support high-quality college credit and career dual enrollment.

Leveraging existing policies, practices and infrastructure, partnerships can focus on improvements through dual enrollment action planning.

Introduction to the Dual Enrollment Action Plan Template

The Dual Enrollment Action Plan Template (see **Appendix C**) is designed to assist school districts and postsecondary institutions in systematically enhancing and expanding their dual enrollment programs. By leveraging existing policies, practices, and infrastructure, this template provides a structured approach to identify areas for improvement, set actionable goals, and foster effective partnerships.

Purpose and Scope

The primary purpose of this action plan template is to facilitate collaborative planning and implementation efforts between school districts and postsecondary institutions. It aims to:

- **Enhance Program Quality:** Ensure that dual enrollment courses meet high academic standards and provide meaningful learning experiences for students.

- **Increase Accessibility:** Expand access to dual enrollment opportunities for all students.
- **Strengthen Partnerships:** Foster strong, sustainable partnerships between K-12 and postsecondary institutions to support student success and program growth.

Key Components of the Action Plan

Evaluate existing dual enrollment policies, practices, and infrastructure to identify strengths and areas for improvement. The Dual Enrollment Articulation Agreement can be a useful resource in guiding action plan development and strategy sustainability. By reviewing the Dual Enrollment Action Plan and identifying opportunities and limitations, the action plan can serve as a means to solving policy and infrastructure issues.

Goal Setting: Establish clear, measurable goals for enhancing dual enrollment programs, aligned with district and institutional priorities.

Action Steps: Develop targeted approaches to address identified needs, such as expanding course offerings, improving student support services, and increasing outreach efforts.

Implementation Plan: Outline a detailed plan for implementing strategic initiatives, including timelines, responsible parties, and required resources.

Monitoring and Evaluation: Establish mechanisms for ongoing monitoring and evaluation to track progress, assess impact, and make data-driven adjustments as needed.

Leveraging Existing Resources

By leveraging existing policies, practices, and infrastructure, school districts and postsecondary institutions can build on their current strengths while addressing gaps and challenges. This approach ensures that improvements are both sustainable and scalable, ultimately leading to more effective and impactful dual enrollment programs.

During the Florida Pathways Institute, school districts and postsecondary institution participants collaborated to enhance and expand dual enrollment programs. The summary in **Appendix D** highlights the partnership vision and goals identified by the participants, showcasing their collective efforts and achievements in improving course offerings, student support services, access, partnerships, and data collection practices, such as:

- By the end of the academic year, increase the number of students enrolled in dual enrollment courses by 10%, by expanding course offerings and promoting awareness of the benefits of dual enrollment among students and parents.
- Increase the number of dual enrollment students who graduate with their Associate of Arts degree concurrently with receiving their high school diploma by 15 percent.
- Establish a Dual Enrollment Council to provide regional leadership in the creation of Dual Enrollment Pathway Strategies.

The Dual Enrollment Action Plan Template is a valuable tool for guiding collaborative efforts to enhance and expand dual enrollment opportunities. By focusing on continuous improvement and strategic partnerships, school districts and postsecondary institutions can create robust dual enrollment programs that support student achievement and postsecondary success.

Promote the purposeful expansion of dual enrollment participation and success.

The Florida Pathways Institute: Dual Enrollment Partnerships was a strategic initiative aimed at enhancing and expanding dual enrollment opportunities across the state. Over the course of a year, participants engaged in a series of collaborative activities designed to promote purposeful expansion and success in dual enrollment programs. Central to this initiative were three virtual workshops that provided in-depth exploration and expert insights on key topics:

- **Career Dual Enrollment:** This workshop focused on integrating career and technical education (CTE) pathways into dual enrollment programs, enabling students to gain industry-relevant skills and certifications alongside their postsecondary credits. See Appendix E.
- **Early College Programs vs. Early College High Schools:** Participants examined the distinctions and benefits of early college programs and early college high schools, discussing best practices for implementation and student support. See Appendix F.
- **Alternate Placement Methods:** This session explored innovative placement methods to ensure students are accurately assessed and placed in appropriate dual enrollment courses, thereby enhancing their chances of success. See Appendix G.

These virtual workshops, along with other institute activities, provided a comprehensive framework for school districts and postsecondary institutions to develop and refine their dual enrollment action plans. By leveraging existing policies, practices, and infrastructure, the institute fostered strong partnerships and strategic planning to support the growth and effectiveness of dual enrollment programs across Florida.

Develop the capacity for strategic leadership in dual enrollment partnerships.

Strategic leadership is crucial for the continued success and expansion of dual enrollment programs. The Florida Pathways Institute: Dual Enrollment Partnerships emphasized the development of strategic leadership skills among participants to ensure dual enrollment initiatives are effectively managed and continuously improved. This objective is vital for several reasons:

- **Vision and Direction:** Strategic leaders are responsible for setting a clear vision and direction for dual enrollment programs. They ensure all stakeholders, including school districts and postsecondary institutions, are aligned with common goals and objectives. This alignment is essential for creating cohesive and effective dual enrollment pathways that benefit students.
- **Collaboration and Partnership:** Effective dual enrollment programs rely on strong partnerships between K-12 schools and postsecondary institutions. Strategic leaders play a key role in fostering these partnerships by facilitating communication, building trust, and coordinating efforts across different organizations. This collaboration ensures dual enrollment programs are well-integrated and responsive to the needs of students.
- **Resource Management:** Strategic leaders are adept at managing resources, including funding, personnel, and infrastructure. They identify and leverage existing resources to support dual enrollment programs while also seeking new opportunities for funding and support. Efficient resource management is critical for sustaining and expanding dual enrollment initiatives.
- **Data-Driven Decision Making:** Strategic leaders use data to inform their decisions and drive continuous improvement. By analyzing program data, they can identify trends, assess program effectiveness, and make evidence-based adjustments. This data-driven approach ensures that dual enrollment programs meet their goals and provide high-quality educational experiences for students.
- **Advocacy and Policy Development:** Strategic leaders advocate for policies that support dual enrollment programs at the local, state, and national levels. They work to influence policy decisions that enhance program accessibility, quality, and sustainability. Effective advocacy ensures that dual enrollment programs receive the support and recognition they need to thrive.
- **Professional Learning and Capacity Building:** Strategic leaders prioritize professional learning for themselves and their teams. They seek out opportunities for training and capacity building to stay informed about best practices and emerging trends in dual enrollment. This commitment to professional growth ensures that leaders are well-equipped to navigate the complexities of dual enrollment programs.

Developing the capacity for strategic leadership promotes successful dual enrollment programs that provide meaningful educational opportunities for all students. This focus on strategic leadership is essential for fostering innovation, ensuring program sustainability, and achieving long-term success in dual enrollment initiatives.

Emphasizing the Need for a Strong Vision

As we conclude this toolkit, it is essential to underscore the importance of a strong, guiding vision for the success and expansion of dual enrollment programs. A clear and compelling

vision not only sets the direction for our efforts but also unites all stakeholders in a shared commitment to excellence.

An example of one a vision that emerged from the *Florida Pathways Institute: Dual Enrollment Partnerships* is:

Our vision is to have the most efficient, streamlined, and impactful dual enrollment program in the state of Florida. We aspire to create an environment where every eligible student has the opportunity to participate in at least one dual enrollment class before graduating high school. This vision drives us to continually improve our practices, innovate our approaches, and remove barriers to access.

Another example focused on strategic alignment and unprecedented growth.

The remarkable growth in secondary school student participation in dual enrollment programs is a testament to the power of a shared vision. This accomplishment stems from a strategic alignment that focuses on three key components:

- ***Strengthening Relationships:*** Building and nurturing strong partnerships between school districts, postsecondary institutions, and community organizations is fundamental. These relationships foster collaboration, trust, and mutual support, ensuring that dual enrollment programs are well-coordinated and responsive to student needs.
- ***Leveraging Technology:*** Embracing technological advancements enhances the efficiency and accessibility of dual enrollment programs. From online course offerings to digital advising tools, technology plays a crucial role in expanding opportunities and supporting student success.
- ***Expanding Provisions within the Annual Dual Enrollment Articulation Agreement:*** Continuously refining and expanding the provisions of the annual articulation agreement ensures that dual enrollment programs remain flexible, comprehensive, and aligned with evolving educational standards and student aspirations.

By maintaining a strong vision and strategic focus, we can continue to build on our successes and create a dual enrollment program that truly serves all students. Let us remain committed to this vision, working together to provide every student with the opportunity to achieve their full potential through dual enrollment.

